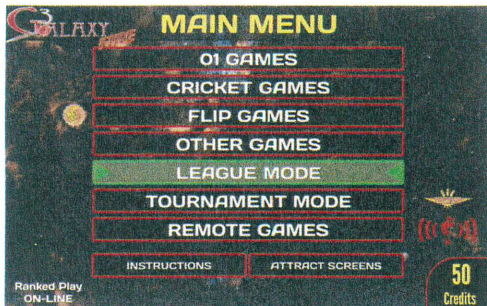
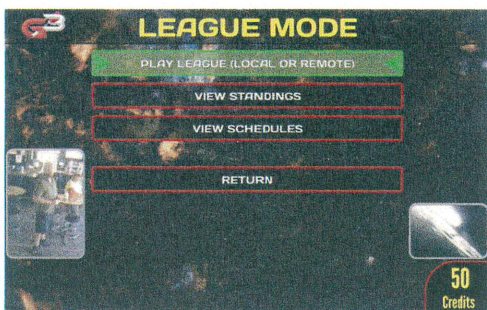


LEAGUE PLAY CHEAT SHEET

1. From the Main Menu, select **League Mode**.



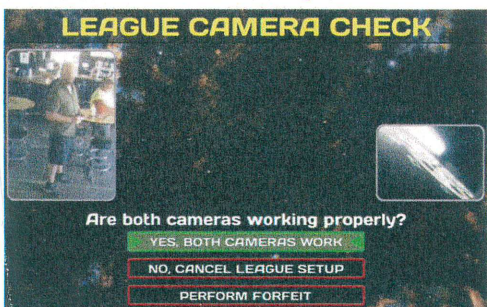
2. In League Mode, select **Play League (Local or Remote)**.



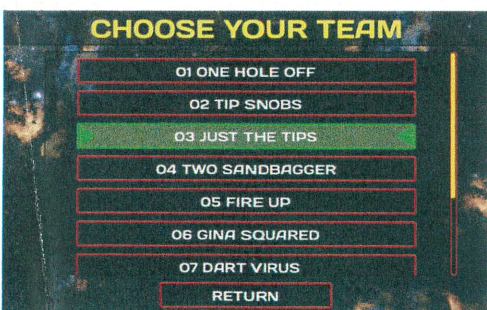
3. Select the league you are playing tonight.



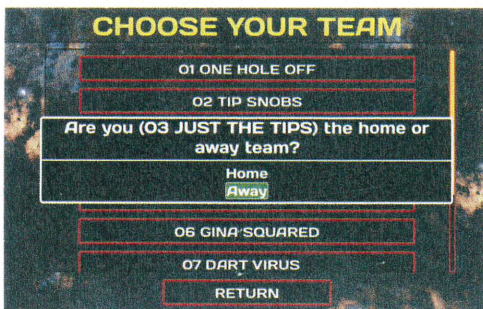
4. Select, **Yes, Both Cameras Work** in **League Camera Check** if both cameras are working.



5. Choose Your Team.

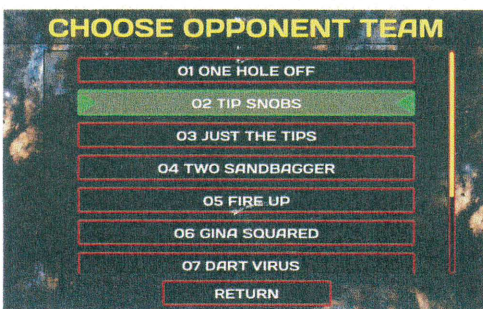


6. Choose whether you are **Home** or **Away**.

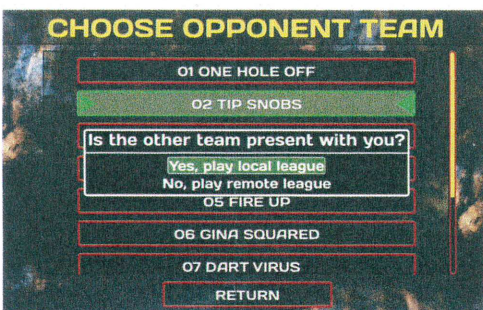


Warning: Follow the schedule when choosing Home or Visitor.

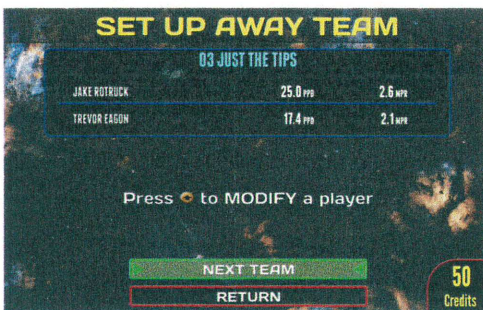
7. Choose Opponent Team.



8. Choose **Yes, Play Local League** if your opponent is with you at the location. Otherwise choose **No, Play Remote League**.



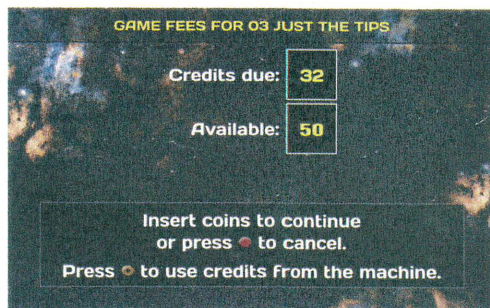
9. Adjust your roster as needed (see steps 9A and 9B). If your team roster is OK, go to step 11.



9A. If a substitute is needed, select the player to be subbed for. If a regular sub is available, select the sub that will replace the regular player. If the sub isn't on your roster, choose **New Substitute** and enter in the first and last name of the player.

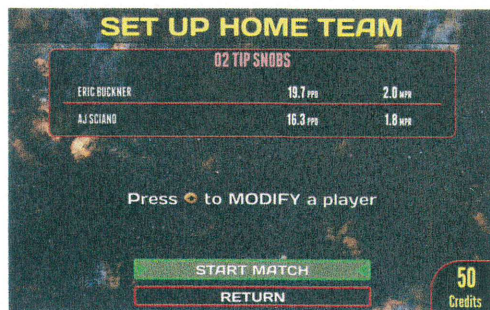
9B. To swap players, highlight and select the player to move. Next, highlight and select the player that you are swapping with.

If prompted, pay your Team Fees.



10. Allow your opponent time to adjust their roster using the same steps as in 9.

If prompted, pay your Team Fees.



11. With both teams ready to play, select **START MATCH**. Each game in the match will list the Players involved and what type of game it is. Insert the required cost of the game and select **"START GAME"**. Repeat for all games in the match.

